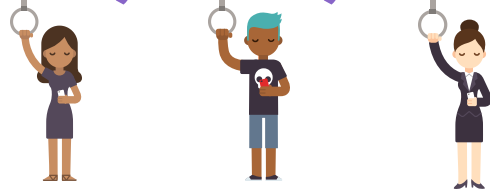


# Rail Passenger Transport

Transport, Postal and Warehousing ANZSIC: 4720 Rail Transport

## Number of Passenger Trips

# 10,057,553



is the number of passenger trips by train, bus and ferry within the Metropolitan Transperth System in August 2021.

## Industry Revenue

# \$1,3878.3 BN

is the annual revenue. This is expected to grow to \$10.1BN in 2025 to 26 as a result of the expanding national network.

## Industry Employment

# 1,387

Train and Tram Drivers are employed in Western Australia.



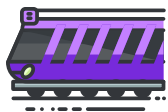
## Train Drivers



# 92% Male

Train Drivers are predominantly male. The rail industry has established several strategies to encourage female uptake of roles. These conversations continue throughout industry to promote diversity and address these challenges.

## Number of Businesses



# 25

is the number of Rail Passenger Transport businesses nationally. In WA regional passenger trains are operated by TransWA and the Indian Pacific, with the Transperth Network servicing the metropolitan areas.

## Employment



# 24,942

employees work within the Rail Passenger Transport industry.

\*Source: LDSC Industry Profile, Rail Passenger 2021

